

A3MH SIZE: 1/4"~3"



## DIRECT MOUNTING

STAINLESS STEEL AISI 316 (Din 1.4408)  
 STAINLESS STEEL AISI 304 (Din 1.4301)  
 CARBON STEEL S-45C (DIN 1.0619)

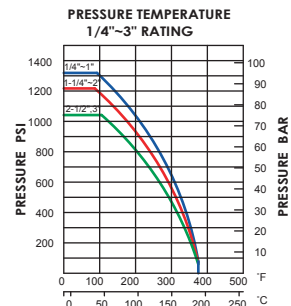
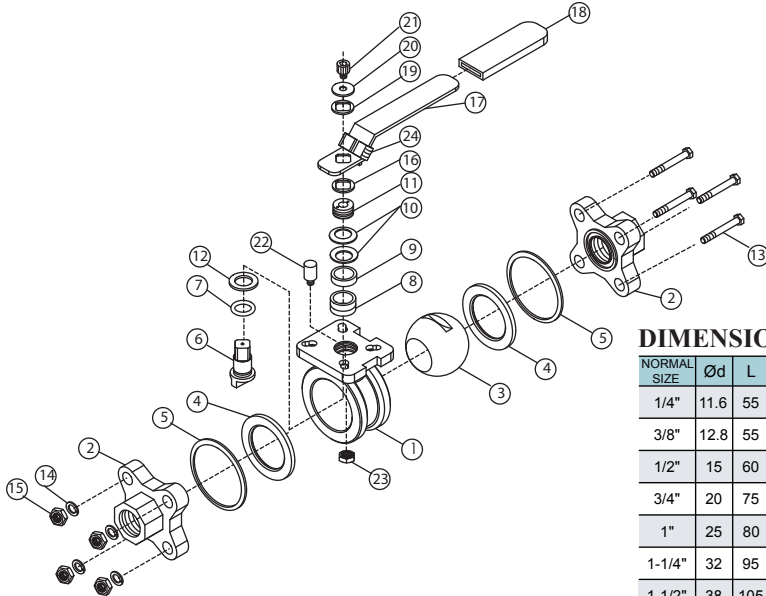
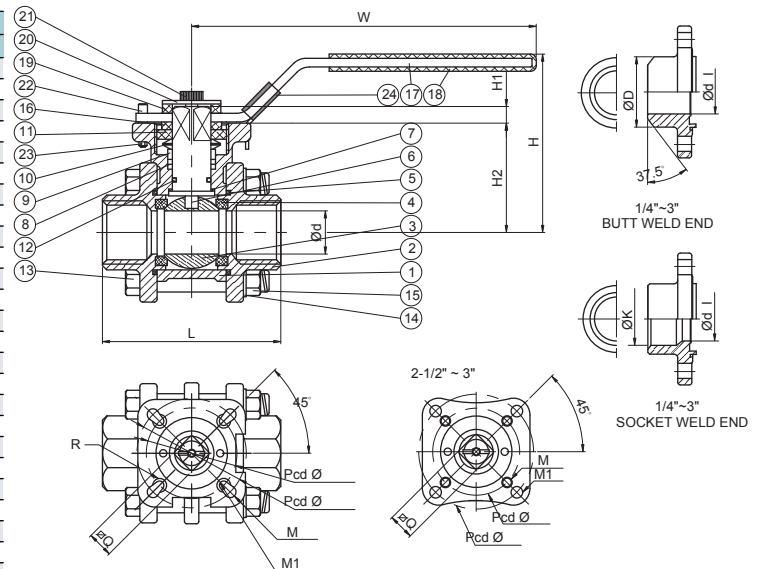
### Features :

- \*Pipe thread in accordance with ANSI B2.1, BS21 1973, DIN259/2999, ISO 228
- \*Lug body
- \*Blow-out proof stem/Full port
- \*Investment casting body and cap
- \*1000PSI (69BAR) W.O.G.
- \*Direct Mounting Pad for ISO Standard 5211
- \*Screwed end, butt weld end, socket weld end.
- \*Material: ASTM-A351-CF8M, ASTM-A351-CF8 & ASTM-A216-WCB

**\*OPTION: Locking device**

## MATERIALS LIST

ITEM	PARTS	QTY	MATERIALS		
			A3MH-316	A3MH-304	A3MH-WCB
1	BODY	1	ASTM-A351-CF8M	ASTM-A351-CF8	ASTM-A216-WCB
2	CAP	2	ASTM-A351-CF8M	ASTM-A351-CF8	ASTM-A216-WCB
3	BALL	1	ASTM-A351-CF8M	ASTM-A351-CF8M	ASTM-A351-CF8M
4	BALL SEAT	2	15%R-PTFE	15%R-PTFE	15%R-PTFE
5	JOINT GASKET	2	15%R-PTFE	15%R-PTFE	15%R-PTFE
6	STEM	1	AISI 316	AISI 316	AISI 316
7	THRUST WASHER	1	PTFE	PTFE	PTFE
8	STEM PACKING	2	PTFE	PTFE	PTFE
9	HIGH WASHER	1	AISI 304	AISI 304	AISI 304
10	BELLEVILLE WASHER	2	AISI 301	AISI 301	AISI 301
11	INSERT CAP	1	AISI 304	AISI 304	AISI 304
12	O-RING	1	VITON	VITON	VITON
13	BOLT	4 (2-1/2", 3" x 6)	AISI 304	AISI 304	AISI 304
14	SPRING WASHER	4 (2-1/2", 3" x 6)	AISI 304	AISI 304	AISI 304
15	HEX NUT	4 (2-1/2", 3" x 6)	AISI 304	AISI 304	AISI 304
16	SQUARE WASHER	1	AISI 304	AISI 304	AISI 304
17	HANDLE	1	AISI 430	AISI 430	AISI 430
18	PLASTIC COVER	1	P.V.C	P.V.C	P.V.C
19	SQUARE WASHER	1	AISI 304	AISI 304	AISI 304
20	WASHER	1	AISI 304	AISI 304	AISI 304
21	HANDLE NUT	1	AISI 304	AISI 304	AISI 304
22	STOP PIN	1	AISI 304	AISI 304	AISI 304
23	HEX NUT	1	AISI 304	AISI 304	AISI 304
24	LOCK DEVICE	1	AISI 430	AISI 430	AISI 430
25	HENDLE SHIM	1	15% R-PTFE	15% R-PTFE	15% R-PTFE



## DIMENSIONS

NORMAL SIZE	Ød	L	H	H1	H2	W	ISO-5211										
							Pcd Ø	Q	ØM	ØM1	ØD	R	Ød	ØK	CV FACTOR	TORQUE kgf-cm	KGS
1/4"	11.6	55	58	7.5	37	112	F03 Ø36 F04 Ø42	9	Ø3.0	Ø3.0	Ø20	4.3	Ø11	Ø14	6.6	40	0.46
3/8"	12.8	55	58	7.5	37	112	F03 Ø36 F04 Ø42	9	Ø3.0	Ø3.0	Ø20	4.3	Ø12.5	Ø17.7	7.9	40	0.48
1/2"	15	60	60	7.5	38	112	F03 Ø36 F04 Ø42	9	Ø3.0	Ø3.0	Ø23	4.3	Ø16	Ø21.7	11.2	54	0.54
3/4"	20	75	59	8.8	41.7	138	F03 Ø36 F04 Ø42	11	R3.0	R3.0	Ø28	4.3	Ø20	Ø27.1	21	74	0.82
1"	25	80	68	8.8	44.4	138	F04 Ø42 F05 Ø50	11	R3.5	R3.0	Ø34	5.5	Ø25	Ø33.5	34	104	1.1
1-1/4"	32	95	91	10.4	54	205	F04 Ø42 F05 Ø50	14	R3.5	R3.0	Ø41	5.5	Ø32	Ø42.6	57	135	1.72
1-1/2"	38	105	87	10.4	59.5	205	F05 Ø50 F07 Ø70	14	R4.5	R3.5	Ø49	5.5	Ø38	Ø48.7	80	180	2.3
2"	50	120	94	10.4	67	205	F05 Ø50 F07 Ø70	14	R4.5	R3.5	Ø62	5.5	Ø51	Ø61.1	148	250	3.5
2-1/2"	65	160	133	18	102	330	F07 Ø70 F10 Ø102	17	M10	Ø11	Ø76	5.5	Ø65	Ø73.8	265	400	12.38
3"	80	180	144	18	112.5	330	F07 Ø70 F10 Ø102	17	M10	Ø11	Ø92	5.5	Ø80	Ø89.8	415	660	19.83